

# Компоненты заправочных станции LPG

*Cowell Machinery*

По вопросам продаж и поддержки обращайтесь:

**Архангельск** (8182)63-90-72

**Астана** +7(7172)727-132

**Белгород** (4722)40-23-64

**Брянск** (4832)59-03-52

**Владивосток** (423)249-28-31

**Волгоград** (844)278-03-48

**Вологда** (8172)26-41-59

**Воронеж** (473)204-51-73

**Екатеринбург** (343)384-55-89

**Иваново** (4932)77-34-06

**Ижевск** (3412)26-03-58

**Казань** (843)206-01-48

**Калининград** (4012)72-03-81

**Калуга** (4842)92-23-67

**Кемерово** (3842)65-04-62

**Киров** (8332)68-02-04

**Краснодар** (861)203-40-90

**Красноярск** (391)204-63-61

**Курск** (4712)77-13-04

**Липецк** (4742)52-20-81

**Магнитогорск** (3519)55-03-13

**Москва** (495)268-04-70

**Мурманск** (8152)59-64-93

**Набережные Челны** (8552)20-53-41

**Нижний Новгород** (831)429-08-12

**Новокузнецк** (3843)20-46-81

**Новосибирск** (383)227-86-73

**Орел** (4862)44-53-42

**Оренбург** (3532)37-68-04

**Пенза** (8412)22-31-16

**Пермь** (342)205-81-47

**Ростов-на-Дону** (863)308-18-15

**Рязань** (4912)46-61-64

**Самара** (846)206-03-16

**Санкт-Петербург** (812)309-46-40

**Саратов** (845)249-38-78

**Смоленск** (4812)29-41-54

**Сочи** (862)225-72-31

**Ставрополь** (8652)20-65-13

**Тверь** (4822)63-31-35

**Томск** (3822)98-41-53

**Тула** (4872)74-02-29

**Тюмень** (3452)66-21-18

**Ульяновск** (8422)24-23-59

**Уфа** (347)229-48-12

**Челябинск** (351)202-03-61

**Череповец** (8202)49-02-64

**Ярославль** (4852)69-52-93

Единый адрес для всех регионов: [crw@nt-rt.ru](mailto:crw@nt-rt.ru) || [www.cowell.nt-rt.ru](http://www.cowell.nt-rt.ru)

# LPG Dispenser

CWK50L111 1-Nozzle 1-Flow Meter  
 CWK50L222 2-Nozzle 2-Flow Meter  
 CWK50L424 4-Nozzle 4-Flow Meter



CWK50L111F



CWK50L222T



CWK50L424F

## Technical Specification

Flow Rate:	5-50 L/min
Accuracy:	±0.5%
Display Resolution:	0.01 liter
Max. Dispensing Range:	0.00 ~ 9999.99L
Dispense Amount:	0.01 ~ 9999.99L
Unit Price:	0.01 ~ 99.99L
Totalizer:	0 ~ 999999L
Temperature:	-40℃ ~ 45℃
Working Pressure:	0~2.5MPa
Intensity Test:	2.0MPa
Air Tightness Test:	1.8MPa
Solenoid Valve:	AC220V Ex-proof
Safety Return Valve:	1.6MPa
Hose:	Internal Diameter 13mm (Length 0.7m+5.2m)
Power Supply:	AC380V ± 20% or AC220V ± 20%

## Packaging Data

Model	CWK50L111	CWK50L222
Packaging	Strong Carton	Strong Carton
Net Weight	160Kgs	205Kgs
Gross Weight	180Kgs	225Kgs
Size	93 × 47 × 200cm	93 × 54 × 200cm

# DB-65 LPG Side Channel Multistage Pump

## Description

The DB-65 multistage pump, centrifugal and side channel, is designed with 6 stages, having a horizontal configuration, shaft sealing by mechanical seal without cooling, for handling LPG (liquid gas), the liquids involving high-differential pressure, low NPSH conditions and aerated liquids up to 50% gas, such as pumping from underground tanks. The use of a pre-compression turbine at the suction end makes it possible to obtain a very small required NPSH, so that this pump can be used under very difficult suction conditions.

### Technical Specification

Direction of rotation:	Anti-clockwise facing the end of the pump drive shaft
Max. Pressure:	40 bars at 120°C
Speed:	1450rpm
Power:	380V,50Hz,4KW
Ambient Temperature:	20°C ~ +60°C
Number of stages:	6
Connecting flanges:	DIN 2501, PN 40 as per DIN 2501, PN 40
Bearings:	Sleeve bearing at the pump end, ball bearing at the drive end



DB-65 Pump



DB-65 Pump with Coupling Drive & Motor

Flow rate		DB-65	NPSH1[m]	NPSH2[m]
1.0/h <sup>3</sup>	Delivery head(m)	243	1.35	0.17
	Power(KW)	6		
1.5/h <sup>3</sup>	Delivery head(m)	219	1.25	0.17
	Power(KW)	5.5		
2.5/h <sup>3</sup>	Delivery head(m)	169	1.1	0.17
	Power(KW)	4.35		
3.5/h <sup>3</sup>	Delivery head(m)	120	0.95	0.17
	Power(KW)	3.4		
4.5/h <sup>3</sup>	Delivery head(m)	76	0.95	0.18
	Power(KW)	2.65		

### Packaging Data

Model	Pump only	Pump with Motor
Packaging	1pc/Wooden Box	
Net Weight	64Kgs	136Kgs
Gross Weight	78Kgs	160Kgs
Size	100×48×45cm	117×42×45cm

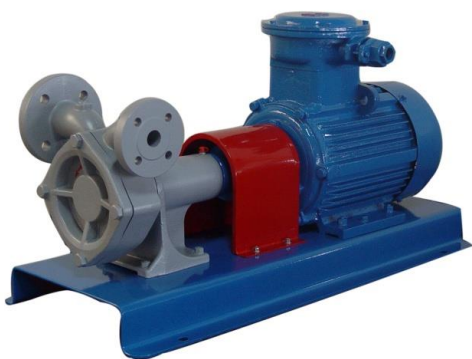
## Application

- LPG cylinder filling
- Pumping LPG from underground storage
- Bulk filling operations
- Loading/unloading of bulk trucks and transport trailers
- Vaporizer feed pumps.

# LWB-150 LPG Turbine Pump

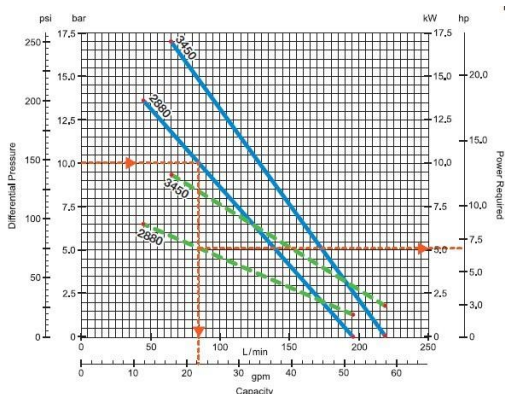


LWB-150



LWB-150 LPG Turbine Pump with Coupling Drive

## Flow Rate Curve



## Application

- Autogas dispensing
- Cylinder filling
- Vaporizer feed
- Bulk Transfer

## Description

LWB-150 LPG Turbine Pump is for high differential pressure application like aboveground & underground tank transfer etc. or direct-drive mounting with gear reducer for option.

## Advantage

- Economic alternative to submersible designs.
- Meeting multiple demands for low or high flow rate with high differential pressure in LPG application. This pump is an ideal pump for two dual hose LPG dispensers.
- Continuous duty design.
- Easy to use and economic.

## Technical Specification

Inlet:	40mm/1.5"
Outlet:	25mm/ 1"
Flow Rate:	85 L/min
Speed:	50Hz/2880 RPM or 60Hz/3450RPM
Max Working Pressure:	27.6 Bar/400PSI
Differential Pressure:	17.2 Bar/250PSI
Temperature:	-32°C~+107°C

## Packaging Data

Model	Pump only	Pump with Motor
Packaging	1pc/Wooden Box	
Net Weight	29Kgs	120Kgs
Gross Weight	35Kgs	140Kgs
Size	37.5×30×40cm	95×45×60cm

# LYB – 2000 LPG Vane Pump

## Description

LYB-2000 LPG vane pump is positive displacement pump, which is specially designed to perform in such severe operating conditions as high differential pressure, pump over speeding, poor suction conditions. It has V-belt or direct-drive mounting with gear reducer for option.



LYB-2000

## Advantage

- Innovative cam design virtually eliminates cavitation.
- New materials utilized in cam & blades, and heavy duty bearings extending pump life.
- Single mechanical seal, easy seal replacement and maintenance.
- Large non-metallic pins are suitable for higher pump speed.



Pump with V-Belt Drive

### Flow Rate

Speed RPM	Differential Pressure (Bar)	Flow Rate (L/min)	Power (KW)
800	3.4	323	2.3
	6.9	287	4.6
650	3.4	261	1.9
	6.9	227	3.8
500	3.4	189	1.4
	6.9	155	2.9

### Technical Specification

Inlet & Outlet:	50mm/2"
Max. Working Pressure:	28.6 Bar
Differential Pressure:	8.6 Bar
Max.Speed:	800RPM
Temperature:	-32°C~+107°C
Internal Relief Valve:	Yes

### Packaging Data

Model	Pump only
Packaging	1pc/Wooden Box
Net Weight	41Kgs
Gross Weight	50Kgs
Size	48×35×35cm

## Application

Typical applications for LPG, NH3 bulk transfer include LPG cylinder filling, loading and unloading of bulk trucks and transport trailers.

# LYB-40 LPG Sliding-vane Pump

## Description

LPG sliding vane pump is commonly found in the LPG industry because its high pumping efficiency, long life, ease of maintenance. Its housing and rotors are constructed of ductile iron for high strength. The vanes are self-adjusting for wear. It can handle small amounts of vapor formed at the pump suction. V-belt and coupling drive mounting are available for choice.

## Application

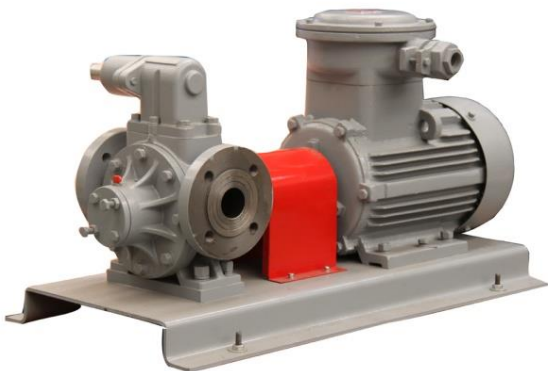
- Cylinder filling
- Loading/unloading of bulk trucks and transport trailers
- Automotive fillings
- Vaporizer feed pumps



LYB-40

## Technical Specification

Inlet & Outlet:	40mm/1.5"
Flow Rate:	140 L/min
Speed:	940RPM
Max Working Pressure:	25 Bar/362PSI
Differential Pressure:	4 Bar/58PSI
Vacuum:	0.4Bar
NPSH:	2.5m
Power:	2.2 Kw



LYB-40 LPG Pump with Coupling Drive & Motor

## Packaging Data

Model	LYB-40 Bare Pump	LYB-40 Pump with Motor
Packaging	1pc/Wooden Box	1pc/Wooden Box
Net Weight	30Kgs	103Kgs
Gross Weight	37Kgs	118Kgs
Size	40 × 36 × 47cm	80 × 45 × 54cm

## CWL-50 Mechanical Mobile LPG Dispenser

Technical Specification	
Flow Rate:	50L
Max Working Pressure:	1.8MPa
Accuracy:	±0.3%
Vacuum:	≥0.035MPa
Totalizer:	8 Digital
Sub-Total:	5 Digital
Temperature:	-40°C~+55°C

Standard Components	
Flow Meter:	LPG-2 LPG Meter
Pump:	LYB-40 Vane Pump
Separator:	LPG Separator
Power:	AC380±20% 50±1Hz or AC220±20% 50±1Hz
Ex-proof Motor:	380V,50Hz,4KW or 220V,50Hz,4KW
Outlet Hose:	3/4" 500mm
Inlet Hose:	Flange
Breakaway:	Yes
Manometer:	Yes



LPG Mobile Dispenser

## LPG Separator

Check valve, filter, bypass pipe built in LPG separator.

Technical Specification	
Working Pressure:	2.5MPa
By Pass Pressure:	4.0MPa
Strainer:	0.08mm

Packaging Data	
Packaging	1pc/Wooden Box
Net Weight	17.5Kgs
Gross Weight	23Kgs
Size	47×30×31cm



LPG Separator



# LPG Compressor

ZW (CZW) series of liquefied petroleum gas recycle compressor is vertical, single acting, air-cooled, oil-free lubrication, reciprocating piston unit. This series compressor cylinder & packing components are oil-free to ensure the purity of its working medium. Crankshaft, connecting rod, crosshead components are pressure lubrication (splash lubrication) to ensure the reliability of lubrication.

Excellent complement, satisfied performance, light weight, small occupying area, more compressing ratio, smooth running, long service life of spare parts, simple operation, reliability and easy maintenance. ZW series compressors have both fixed or movable types; both normal atmosphere (0.1~1.5MPa) and high pressure (1.6~2.4MPa) to meet different requirements of customers.

## Applications

It is suitable for working in large, middle and small LPG storages, conveying and distribution stations, bottle filling stations, gasification stations, gas mixing stations and tank vehicle loading and has the functions of vehicle loading, unloading, bottle filling, bottle emptying, conveying, residue removal and residual gas recycling and it can be also used in the processes of other petrol-industries.



LPG Compressor



LPG Mobile Compressor

## Technical Specification

Model	ZW-0.2/ 10-16	ZW-0.4/ 10-16	ZW-0.5/ 10-16	ZW-0.6/ 10-16	ZW-0.8/ 10-16	ZW-1.0/ 10-16	ZW-1.3/ 10-16	ZW-1.6/ 10-16	ZW-20/ 10-16
Nominal Capacity M3/Min	0.2	0.4	0.5	0.6	0.8	1.0	1.3	1.6	2.0
Delivery Pressure MPa	1.6	1.6	1.6	1.6	1.6	1.6	1.6	1.6	1.6
Intake Pressure MPa	1.0	1.0	1.0	1.0	1.0	1.0	1.0	1.0	1.0
Intake Temperature	≤40	≤40	≤40	≤40	≤40	≤40	≤40	≤40	≤40
Delivery Temperature	≤110	≤110	≤110	≤110	≤110	≤110	≤110	≤110	≤110
Speed r/min	500	750	980	775	550	750	850	1000	750
Lubricant Temperature	70	70	70	70	70	70	70	70	70
Ex-proof Motor Power	4kw	5.5kw	7.5kw	7.5kw	11kw	15kw	18.5kw	22kw	30kw



## LPG-2 Flow Meter



### Description

LPG-2 flow meter is in construction of stainless steel bush and four piston positive displacement with check valve built in, with advantage of high reliability , good wearability, precise measure, and long life.

### Technical Specification

Max Working Pressure:	1.8MPa
Flow Rate:	5-60L
Discharge rate per revolution:	0.5L/r
Adjustable Minimum Volume:	0.1%
Accuracy:	±0.5%
Repeatable Tolerance:	≤0.25%



LPG -2

### Packaging Data

Packaging	1pc/carton
Net Weight	31Kgs
Gross Weight	33Kgs
Size	36 × 29 × 36cm

## LPG Manometer



LPG Manometer

### Technical Specification

Accuracy	+/-2.5%
Pressure	0-4MPa

## LPG Hose



LPG Hose

A Type Rubber Hose, 1M with coupling

B Type Rubbler Hose with Stainles Steel Net, 1M with coupling

## Description

Entire fueling operation with single action operation is initiated by simply engaging nozzle to the receptacle with a single squeeze of the hand. HammerLock technology maximum durability. Designed specifically for frequent coupling and uncoupling. Economic design insulated handle protects operator from temperature effects created by high flowing LP gas. Minimal force required to engage nozzle.

Durable construction heavy duty brass, aluminum and stainless steel construction provides excellent corrosion resistance in the harsh fueling environment.

Ease of use Incorporates with a single plane 360° inlet swivel.



LPG Nozzle

Technical Specification	
Inlet:	BSPT/NPT3/4" & 1"
Max.Operating Pressure:	350 PSI
LPG Discharge on Disconnect:	4.3cc
Temperature Range:	-40~85°C (-40~185° F)
Coupling Style:	Italian Style
Body Material:	Aluminum
Internal Components Material:	Brass/Steel
External Components Material:	Brass/Stainless Steel

Packaging Data	
Packaging	10pcs/Carton
Net Weight	20Kgs
Gross Weight	21Kgs
Size	36×32×32cm

## Cylinder Filling Nozzle

Nominal pressure:2.5Mpa

Body Testing Pressure:3.75Mpa

High pressure Sealing Testing Pressure:2.75Mpa

Thread Connection: M20×1.5

Suitable temperature -40~+80°C

Nominal Length with Delivery Pipe: L=2000mm

Material:Alloy Steel

Suitable Medium:LPG, LNG, Ammonia etc.



Cylinder Filling Nozzle

## LPG Solenoid Valve

### Description



LPG Solenoid Valve

- Precise action, reliable, long service.
- Diaphragm of main valve has capability of anti-corrosion and resisting -20°C low temperature.
- Special stainless steel magnetic material never rusts and generates remanent magnetism.
- Class F loop with good insulation.
- Anti-Explosion Class:EXd II B

### Technical Specification

Diameter:	20mm <sup>3</sup> /4"
Connection:	Thread
Flow Rate:	5-50L/min
Working Pressure:	0~1.6Mpa
Voltage:	AC220V 50Hz
Ambient Temperature:	-20°C ~ 65°C

### Packaging Data

Packaging	25pcs/Carton
Net Weight	30Kgs
Gross Weight	31Kgs
Size	36 × 36 × 29cm



LPV-1 Differential Valve

## LPG Differential Valve

### Technical Specification

Model	LPV-1	LPV-2
Working Pressure:	1.8MPa	1.8MPa
Pressure Difference:	0.3Bar	0.3Bar
Flow Rate:	50-60L/Min	50-60L/Min

### Packaging Data

Model	LPV-1	LPV-2
Packaging	36pcs/Carton	5pcs/Carton
Net Weight	25Kgs	27Kgs
Gross Weight	26Kgs	28Kgs
Size	54 × 25 × 37cm	26 × 26 × 14.5cm



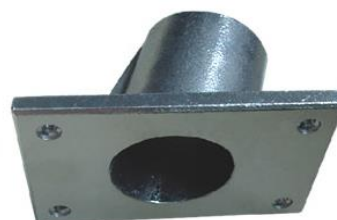
LPV-2 Differential Valve

Technical Specification	
Thread	M27×1.5
Flow Rate	5-50L/Min
Max. Pull	120Bar
Material	Stainless Steel



LPG Breakaway

## LPG Holder



LPG Nozzle Holder

## LPG gas cylinder weight machine

- Accuracy : Class 3
- Capacity : 2kg~120kg
- Quantitative Filling
- Automatically cut off
- Intrinsically-safe Explosive-proof
- Safe and reliable
- One key set
- Simple and convenient
- Automatic tare of the filling gun and bottle weight, filling operation convenient



## Application

- Liquefied Petroleum Gas Filling Machine, explosion-proof

## YQB Series LPG Vane Pump

- Flow rate: 2-80m3/h
- Diameter: 1"-4"
- Power: 1.5KW-18.5KW
- Working pressure: 1.6Mpa



Архангельск (8182)63-90-72  
 Астана +7(7172)727-132  
 Белгород (4722)40-23-64  
 Брянск (4832)59-03-52  
 Владивосток (423)249-28-31  
 Волгоград (844)278-03-48  
 Вологда (8172)26-41-59  
 Воронеж (473)204-51-73  
 Екатеринбург (343)384-55-89  
 Иваново (4932)77-34-06  
 Ижевск (3412)26-03-58  
 Казань (843)206-01-48

Калининград (4012)72-03-81  
 Калуга (4842)92-23-67  
 Кемерово (3842)65-04-62  
 Киров (8332)68-02-04  
 Краснодар (861)203-40-90  
 Красноярск (391)204-63-61  
 Курск (4712)77-13-04  
 Липецк (4742)52-20-81  
 Магнитогорск (3519)55-03-13  
 Москва (495)268-04-70  
 Мурманск (8152)59-64-93  
 Набережные Челны (8552)20-53-41

Нижний Новгород (831)429-08-12  
 Новокузнецк (3843)20-46-81  
 Новосибирск (383)227-86-73  
 Орел (4862)44-53-42  
 Оренбург (3532)37-68-04  
 Пенза (8412)22-31-16  
 Пермь (342)205-81-47  
 Ростов-на-Дону (863)308-18-15  
 Рязань (4912)46-61-64  
 Самара (846)206-03-16  
 Санкт-Петербург (812)309-46-40  
 Саратов (845)249-38-78

Смоленск (4812)29-41-54  
 Сочи (862)225-72-31  
 Ставрополь (8652)20-65-13  
 Тверь (822)63-31-35  
 Томск (3822)98-41-53  
 Тула (4872)74-02-29  
 Тюмень (3452)66-21-18  
 Ульяновск (8422)24-23-59  
 Уфа (347)229-48-12  
 Челябинск (351)202-03-61  
 Череповец (8202)49-02-64  
 Ярославль (4852)69-52-93